

Before Engine Start

Preflight / Daily	COMPLETED
Main Switch	ON
Instrument Switch	ON
Battery Back-up Switch ...	ON
Parking Brake	ON
Papers / Map	ON BOARD
Loose objects	SECURED
Doors	CLOSED & LOCKED
Seat Belts	FASTEN
Fuel Quantity	CHECKED / SET ON EMS
Altimeters	SET (PFD AND G5)
Weight and Balance	SET
Display	SET SPLIT (FL.INSTR / EMS)

Engine Start

Strobe Light	ON
Fuel selector	LEFT TANK
Auxiliary pump	MOMENTARILY ON
Instrument Switch	OFF
Propeller Area	CLEAR
Throttle	CLOSED OR JUST OPEN
Choke	AS NEEDED
Start Engine	TURN KEY
Oil Pressure	CHECK 2-7 BAR
Engine RPM	2000 RPM MAX 2500 RPM WARMING UP (OIL < 50°C)
Instrument Switch	ON

2 Sirius TL 3000 Fixed Prop

Taxi

- NAV Lights**..... ON
- GRS Safety pin**..... REMOVED, CHECK CB FLAP
- Time check**..... START FLIGHT TIMING
- Wind direction** CHECK

NOTE: DO NOT START TAXI UNLESS OIL TEMP HAS REACHED 30⁰

- Radio call** APPLY
- Parking Brake** RELEASE
- Brakes** CHECK

Engine Run-up

- Parking brakes** ON
- Fuel Selector** RIGHT TANK
- Engine instruments** CHECK, WITHIN LIMITS
- Ignition Check** THROTTLE 4000 RPM
- Test Ignition** MAX. DROP 300 RPM
MAX. DIFF. 120 RPM
- Engine instruments** CHECK OIL & FUEL PRESS.
- Throttle** IDLE (1700-2000 RPM)

BEFORE TAKEOFF

Flaps	TAKE-OFF 15 ⁰
Flight Controls	FULL AND FREE
Trim	SET
Display	SET FULL SCREEN
Transponder	SET TO 7000
Fuel Selector	FULLEST OR LEFT TANK
Landing Light	ON
Ignition Switch	KEY POSITION BOTH
Parking brakes	OFF

TAKEOFF/CLIMB/CRUISE PROCEDURE

Wind	CHECK
Throttle	MAX (> 5000 RPM)
Engine Instruments	WITHIN LIMITS
Rotate	AT 45 KTS
Climb	65 KTS
Flaps	RETRACT ABOVE 200 FT.
Climb	70 - 80 KTS
Throttle	CLIMBING POWER
Trim	ADJUST

APPROACH AND LANDING PROCEDURE

Fuel Valves	FULLEST TANK
Engine Instruments	CHECK
Seat belts	FASTEN
Brakes	CHECK PRESSURE
PFD display	FULL SCREEN
Approach / downwind.....	70 - 75 KIAS
On downwind/base flaps ..	15⁰ (max 75 KIAS !)
Trim.....	ADJUST
Base	60 - 65 KIAS
End DW/Base/Final flaps...	45⁰ (max 65 KIAS !)
Final.....	60 KIAS

AFTER LANDING

Flaps	RETRACT
Trim	T/O POSITION
Landing Light	OFF

Engine Limits:

Speed	5800 rpm (5 min.) 5500 rpm (continuous)
Cyl. Head Temp.	90 ⁰ – 135 ⁰ C (135 ⁰ C max.)
Oil Temp.	50 ⁰ C - 110 ⁰ C (130 ⁰ C max.)
Exh. Gas Temp.	880 ⁰ C max..
Oil Pressure	2 - 5 bar (7 bar max. cold eng.)
Fuel Pressure	0,15 – 0,4 bar

AIRCRAFT PARKING

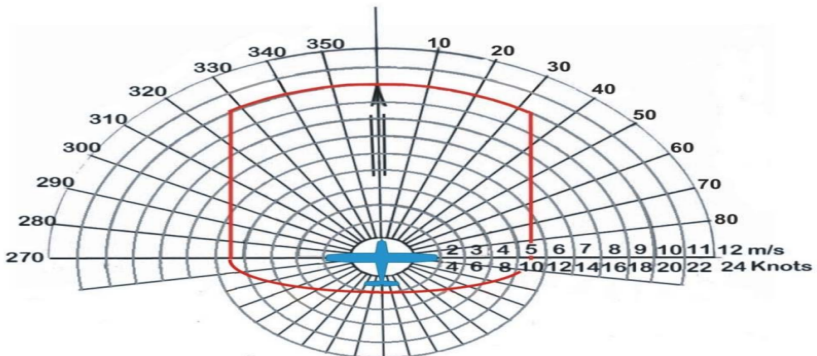
- Parking Brake AS NECESSARY
- Throttle IDLE
- Instruments WITHIN LIMITS
- Time check..... STOP FLIGHT TIMING
- Lights OFF
- Instruments Switch..... OFF
- Ignition Switch OFF & REMOVE KEY
- Main Switch OFF
- Battery Back-up Switch... OFF
- Fuel Selector OFF
- Check All Switches OFF
- Wind Shield Vent CLOSE
- Doors UNLOCK BOTH DOORS
- GRS Safety pin..... INSERT



Flight and operational manual
TL 3000 SIRIUS

5.2.8 Wind effect during the take-off and landing

Headwind	10 m/s
Crosswind	5,5 m/s
Tailwind	2 m/s



AIRCRAFT LIMITS

V_{NE} never exceed	138 KTS
V_A maneuvering	108 KTS
V_{fe} max flap 1	75 KTS
V_{fe} max flap 2	65 KTS
V_H max level	120 KTS
V_X best angle climb	58 KTS
V_Y best rate climb	60 KTS
best economical climb	75 KTS
V_s stall clean	40 KTS
V_{so} full flaps	35 KTS
Best glide speed	70 KTS
Max. crosswind	11 KTS
G-limits flaps up	+4 / -2
G-limits flaps down	+2 / -0
Service ceiling	16.500 FT
Empty weight	322 KG
Max baggage weight	25 KG
Max. T/O weight	600 KG
Maximum Forward CG Limit	22% MAC
Maximum AFT CG Limit	32,5% MAC

TL 3000 EMERGENCY Procedures

ENGINE FAILURE DURING T/O RUN

Throttle IDLE
Brakes APPLY
Wing Flaps RETRACT
Ignition OFF

ENGINE FAILURE AFTER TAKEOFF

Airspeed 65 KNOTS
Flaps STAGE 1 or 2
Fuel Selector OFF
Ignition Switch OFF
Cabin Doors UNLOCK

Land straight ahead, turning only to avoid obstacles

LOSS OF ENGINE POWER IN FLIGHT

Speed 70 KIAS
Auxiliary pump..... ON
Check Fuel/Switch Tank APPLY
Inflight Engine Restart .. APPLY
OR PERFORM EMERGENCY LANDING

EMERGENCY DESCENT

Airspeed MAX PERMITTED:
 V_{NE} = 138 KIAS
 V_{no} = 119 KIAS
Engine RPM MAX. 5800 RPM

TL 3000 EMERGENCY Procedures

ENGINE FIRE DURING T/O RUN

Fuel Selector OFF
Throttle IDLE
Brakes APPLY AS NEEDED

When airplane is under control:

Cabin Heating OFF
Ignition OFF
Parking Brake SET

Evacuate the aircraft!

ENGINE FIRE IN-FLIGHT

Fuel Selector OFF
Throttle FULL OPEN
Cabin Heat PUSH OFF
Ignition Switch OFF AFTER ENGINE STOPS
Airspeed 65 - 137 KIAS
Master Switch OFF
Cabin Doors UNLOCK
Perform emergency landing!

ELECTRICAL FIRE IN FLIGHT

Main Switch..... OFF
Other switches OFF
Cabin Heater PUSH OFF
Ventilation OPEN
PERFORM EMERGENCY LANDING AS SOON AS POSSIBLE

TL 3000 EMERGENCY Procedures

IN-FLIGHT ENGINE RESTART

All unnecessary electrical equipment OFF

Main SwitchON

Auxiliary Pump ON

Fuel Selector FULLEST TANK

Throttle IDLE

Start Engine TURN KEY

After engine is running

Instrument Switch ... ON and press accept

Fuel Pump OFF

Other Switches ON AS NECESSARY

EMERGENCY LANDING WITHOUT ENGINE POWER

Airspeed 70 KIAS

Locate suitable terrain without obstacles

COMM GIVE LOCATION & INTENTIONS

Seat belts TIGHTEN

Starter Key OFF

Auxiliary pump..... OFF

Fuel Selector OFF

Transponder 7700

Radio..... 121.5 MAYDAY MAYDAY

Approach WITHOUT STEEP TURNS

Flaps AS NECESSARY

Main SwitchOFF BEFORE LANDING

TL 3000 EMERGENCY Procedures

ACTIVATION PARACHUTE SYSTEM

**When using the parachute rescue system,
please take into account that
the plane will be destroyed !!!**

Throttle IDLE
Airspeed..... SLOW AIRCRAFT IF POSSIBLE
Ignition OFF
Seat Belts..... TIGHTEN
Parachute Activation Handle... PULL FIRMLY!

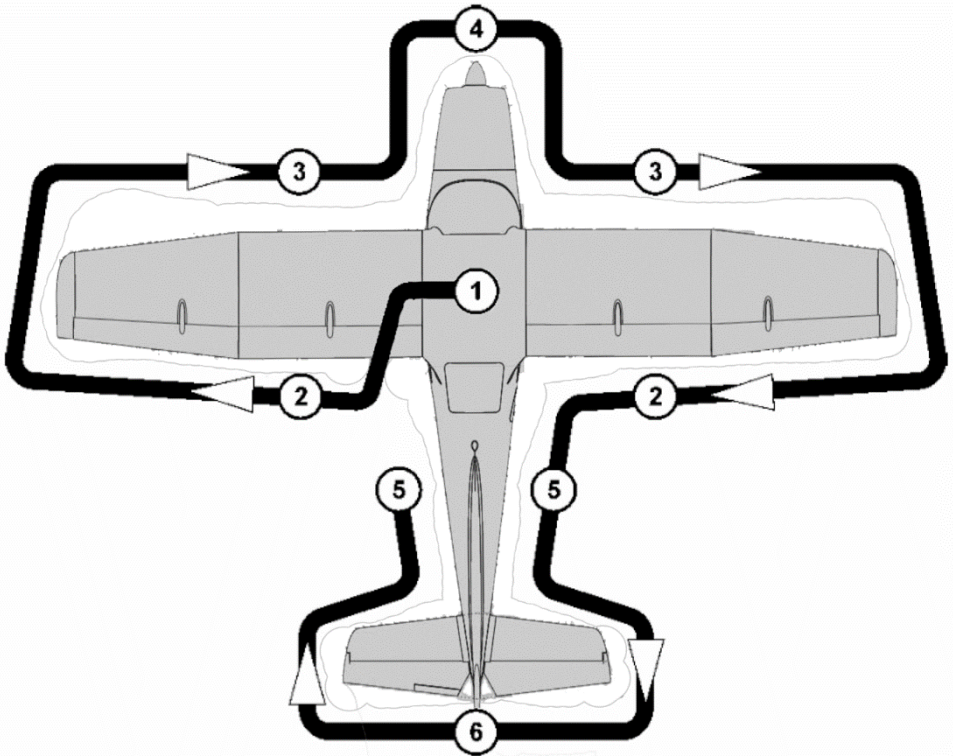
With a force from 12 KG about 40 cm!

Radio..... 121.5 MAYDAY MAYDAY
REPORT POSITION
Transponder 7700

RECOVERY FROM UNINTENTIONAL SPIN

Power IDLE
Flaps RETRACT
Ailerons NEUTRAL
Rudder FULL OPPOSITE
Elevator PUSH FORWARD
**HOLD THESE INPUTS UNTIL THE ROTATION STOPS
THEN:**
Rudder NEUTRAL
Elevator PULL GENTLY TO
RECOVER FROM DIVE

Sirius TL 3000 Daily Inspection



- 1) Papers / Map .. On board
- Cabin All Switches off
- Key OFF, and removed
- GRS Safetypin... Installed
- Fuel Valve OFF
- Main Switch ON
- Flaps Check for proper operation
- Main Switch..... OFF
- Flight Controls.. Check for proper operation
- Trim Check for proper operation. Centered
- Bagage..... Secured
- Seatbelts Check condition and attachment
- Headsets Check condition en connection
- Airsickness bags... At least 2 in armrest

Sirius TL 3000 Daily Inspection

- 2) Flap Surface, Condition, Attachment and Clearance
Aileron Surface, Condition, Attachment and Clearance,
Free movement, Trimtab surface and attachment
Wing Tip Surface, Condition and Strobe/Nav light
Fuel Vent Clean

- 3) Wing Surface Condition, Cleanness
Leading Edge ... Surface, Condition, Cleanness
Pitot Head Condition, attachment, Cleanness
Pitot Cover..... Remove
Fuel Caps..... Installed

- 4) Nose Gear Wheel, Fairing and Leg attachment,
Condition, Check pressure of Tire
Engine Cowling Condition
Prop & Spinner Condition
Oil Quantity Check and replenish as required
Close Oil Tank
Coolant quantity Check
Fuel System Drain Gascolator

- 5) Main Landing Gear Wheel Fairing, Leg and Brake attachment,
Condition, pressure of Tire
Fuselage surface Condition, Cleanness
Static Ports Clean
Antennas Attachment
Chute Window Free from interference

- 6) Tail Cone..... Free of debris
Vertical Tail Unit Condition of Surface, Attachment,
Free Movement, Rudder Stops
Horizontal Tail Unit Condition of Surface, Attachment,
Free Movement, Elevator Stop
Trim Tab Surface & Condition, Attachment
Surface, Condition, Attachment
Aft inspection cover.... Secure

- 7) After Daily Inspection... **CLEAN PROPELLER AND WINDSHIELD!**